



**DEREK DICKOW PRESENTS:**

# **POWER CONNECTIONS**

Building powerful connections in the Cannabis Industry

presented by  **leaflink**

**THURSDAY, NOVEMBER 18, 2021**

**3 PM – 9 PM**

The Townsend Hotel  
Birmingham, Michigan

# “Cannabis Should Be Easy.”

## — BREEZE™

**FAST • SIMPLE • DISCREET**  
CURBSIDE CANNABIS & DELIVERY

---

**HAZEL PARK • BATTLE CREEK**

---

**25% OFF YOUR FIRST ORDER**  
USE PROMO CODE **FIRST25** AT CHECKOUT

\*ALL DISCOUNTS WILL BE VERIFIED AT PURCHASE, NOT STACKABLE WITH DAILY SPECIALS.  
GUESTS ARE ONLY ELIGIBLE TO REDEEM ONE DAILY DISCOUNT PER TRANSACTION. PROMO CODE SINGLE USE ONLY.

**ORDER AT  BREEZE.US  833-9BREEZE**

 SUN TO SAT: 9AM TO 9PM

  @BREEZE.MICHIGAN

 @BREEZEMICHIGAN







# JOIN THE PARTY

CULTIVATION

PROCESSING

MANUFACTURING

WHOLESALE DISTRIBUTION

RETAIL

CANNABIS EVENT SPACE

  
**TRUCENTA**

1675 E Maple Rd, Troy, MI  
(833) 927-3393  
[www.trucenta.com](http://www.trucenta.com)

**BREEZE**

  
**THE CLEAR**

  
**GODFLOWER**

**HOTBOX  
SOCIAL**

  
**DAZED**

**DEEPER  
ROOTS**  
ANALYTICAL WINNERS CO. | MICHIGAN, CANADA

  
**SOCIAL  
VAPE**  
REAL FLAVORS • NO TASTELESS

  
**SWEET SPOT**  
**VEGAN GUMMIES**

# TABLE OF CONTENTS

Sponsor Recognition . . . . . 4

Keynote Speaker Biographies:

- Derek Dickow, Event Host, Power Connector . . . . . 10
- Doug Gordon, EVP & Head of Payments, LeafLink, Inc. . . . . 14
- Andrew Brisbo, Executive Director MRA . . . . . 18

## PRESENTING



## GOLD



# SUPPORT OUR SPONSORS

## COCKTAIL



**HYMAN**

*The highest person in the room.*

## NETWORKING



## LANYARD



## AFTERGLOW



## MEDIA



## SILVER



# SUPPORT OUR SPONSORS

## BRONZE



H.O.D.



PUFF



SKYLABS



*Title Connect LLC*  
*a title insurance agency*



# PROGRAM

## Program

- 3:00 PM Registration, Trade Show, Networking
- 3:30 PM Keynote: Derek Dickow
- How to Build Power Connections
- 3:45 PM 1:1 Speed Networking
- 4:35 PM Panel 1: Leveraging Technology and Resources in Cannabis
- Moderator: Jeff Sloan, StartUp Nation
- Panelists:
- Jon Baugher, POSaBit
  - Matt Hutchinson, LeafLink, Inc.
  - Jim Mattson, Canopy Insurance
  - Billy Zangoulos, Future Grow Solutions
- 5:25 PM Panel 2: Predicting the Future
- Moderator: R.J. King, DBusiness
- Panelists:
- Vincent Brown, Artemis Consulting
  - Shelly Edgerton, LivWell
  - Jeff Gunsberg, Title Connect
  - Terry Judge, CORE Solutions Group, LLC
  - Speaker Jason Wentworth, State of Michigan



# PROGRAM

Program

- |          |  |
|----------|--|
| 6:15 PM  | Cocktail & Hors D'oeuvres Reception  |
| 7:15 PM  | Program Begins   |
| 7:25 PM  | Keynote: Doug Gordon, EVP & Head of Payments,<br>LeafLink, Inc.  |
| 7:40 PM  | Keynote: Andrew Brisbo, Executive Director, MRA  |
| 8:00 PM  | Panel 3: How Can Michigan Win?<br>Moderator: Charlie Langton, FOX 2 Detroit<br>Panelists:<br>Nowfal Akash, Trucenta<br>Andrew Brisbo, MRA<br>Rudy Patros, Securitech<br>Ankur Rungta, C3 Industries Inc. |
| 9:00 PM  | After glow reception   |
| 10:00 PM | Event ends   |



# CLOUD COVER

[CloudCoverCannabis.com](https://CloudCoverCannabis.com)



## INDUSTRIES

### Premier vertically integrated multi- state operator

C3 Industries operates high-quality cultivation, processing and retail assets in four states, with strong brands and consumer recognition.

[C3Industries.com](https://C3Industries.com)



## High Profile

Cannabis Shop

[HighProfileCannabis.com](https://HighProfileCannabis.com)



## **Derek Dickow,** POWER CONNECTOR, KEYNOTE SPEAKER & EXECUTIVE COACH

Derek Dickow connects people to opportunity.

Derek is a world-class networker known for facilitating high-potential introductions. He is a passionate fundraiser, raising millions of dollars for people, projects, political campaigns and charities he's passionate about.

Today, Derek serves as the founder and president of Steward Media Group, an event management, fundraising, and political relations firm promoting best-in-class people, organizations and events. Clients include elected leaders, CEOs and some of the most innovative thinkers.

Derek is a highly sought-after professional keynote speaker and executive coach sharing his expertise on power connections and his "5 Pillars of Purpose-Driven Networking." A proud member of the National Speakers Association, Derek serves on several boards and has been honored with many business and leadership awards.

For more, visit [DerekDickow.com](http://DerekDickow.com)







DEREK DICKOW

WHEN IT COMES TO NETWORKING

# NEVER & ALWAYS

Bring problems with you.

Remember your why.

Talk about yourself.

Ask engaging questions.

Try and sell someone  
on your first interaction.

Look to solve issues  
and add value.

Ask for anything.

Offer to make a  
qualified introduction.

Have your phone out.

Concentrate on making  
good eye contact.

Interrupt to bring their  
story back to you.

Nod your head and listen  
to understand.

Ask what you do?

Working on anything exciting?

How are you?

Have any vacations coming up?

Where are you from?

Anything good happen today?

Pass out your business card.

Get their cell or email and  
open a thread ASAP.

[www.derekdickow.com](http://www.derekdickow.com)

©2021 Derek Dickow. All rights reserved.



INDOOR / OUTDOOR GARDEN SUPPLIES

888-447-7714

**FINANCING OPTIONS AVAILABLE  
EXCLUSIVELY FOR COMMERCIAL GROW OPERATIONS**

# 7 Locations Across Michigan

## Ready To Help With Your Garden

HGS Southfield  
26068 W 12 Mile Rd  
Southfield, MI 48034  
(248) 234-4444

HGS Imlay City  
2028 S Cedar St.  
Imlay City, MI 48044  
810-721-7491

HGS Albion  
1402 N. Eaton St.  
Albion, MI 49224  
517-343-2130

HGS Hazel Park  
24047 Dequindre Rd  
Hazel Park, MI 48030  
(248) 541-0099

HGS Walled Lake  
690 N Pontiac Trail  
Walled Lake, MI 48390  
(248) 669-6063

HGS Sterling Heights  
34863 Schoenherr Rd  
Sterling Heights, MI 48312  
(586) 883-9075

HGS Shelby  
2238 Auburn Rd  
Shelby Township, MI 48317  
(586) 997-2700

**DEDICATED COMMERCIAL STAFF**  
WE HAVE DEDICATED TEAM MEMBERS READY TO HELP  
WITH YOUR COMMERCIAL GROW OPERATION

A photograph of the Michigan State Capitol building at dusk. The building is illuminated with warm lights, and its dome is prominent against a deep blue sky with wispy clouds. Large green trees are on either side of the building, and a paved walkway with decorative bollards leads towards the entrance in the foreground.

**APPARENTLY, THERE IS ONE THING  
REPUBLICANS AND DEMOCRATS  
CAN STILL AGREE ON.**

**GCSI named Michigan's Most Effective Multi-Client Lobbying Firm, nearly two decades running.**

We're honored to have been named Michigan's Most Effective Multi-Client Lobbying Firm for nearly two straight decades. Thank you to all of our clients and all of the Lansing insiders who've helped make this honor possible.

**GCSI** 

*Michigan's premier bipartisan lobbying firm*

[gcsionline.com](http://gcsionline.com)



KEYNOTE SPEAKER:

## **Doug Gordon,** EVP & HEAD OF PAYMENTS, LEAFLINK, INC.

Doug Gordon is a recognized leader and innovator with more than 10 years of experience in the financial technology and digital lending sector. He is an expert at utilizing analytics and technology to create specialized products that meet the capital needs of various asset classes. As Executive Vice President at LeafLink, Doug designed, launched, and leads the LeafLink Financial business line which streamlines the B2B transaction model for cannabis operators. Specifically, LeafLink Financial allows sellers to offer net terms to their buyers and receive guaranteed payment through a true sale factoring model, while allowing buyers to centralize their payables and dynamically manage their cash flow. Prior to LeafLink, Doug co-founded and served as the Executive Vice President of Foundation, a leading small business digital lender backed by the likes of Garrison Investment Group, Goldman Sachs, SunTrust Bank, and Waterfall Asset Management. Foundation provides businesses with loans and lines of credit through partnerships with banks, B2B vendors, and online platforms. During his tenure at Foundation, Doug was responsible for driving the company's growth efforts through large scale strategic partnerships and product innovations while publicly representing Foundation in the media and at industry events. Notable partnerships Foundation struck in the banking and B2B marketplace space include Citizens Bank, Regions Bank, FifthThird, RigUp, Kinnek, and SAP Ariba. Doug studied Neuroscience and Economics at Bucknell University.





# Lockton Michigan Cannabis Practice

*Employee Benefits | Risk Management | Retirement Services*



**Cal Coffman**  
248.225.3690  
ccoffman@lockton.com



**John Price**  
734.645.5309  
jprice@lockton.com

Our team has taken a unique approach to serving an underserved market where the cannabis industry must rely on a partner to navigate a small pool of carriers to help them procure the correct coverage to meet the organization's needs. We work to identify additional risk that may be uninsurable and help manage the risk to protect the balance sheet.

INSURES  
**\$20B**  
in Cannabis  
Market Cap

OVER  
**125**  
Cannabis clients  
across the U.S.

PARTNERSHIPS  
WITH  
**30**  
Cannabis P&C carriers

SUPPORTING THE  
INDUSTRY FOR  
**8 years**  
as a national organization

**Extensive experience with MSOs and vertically integrated companies**

## Questions to consider when evaluating a partner

- Does the broker have any experience with cannabis clients?
- Does the broker have multiple relationships with the insurance carriers that write policies for the cannabis industry?
- What other services does the broker offer aside from marketing insurance policies?
- What resources to reduce risk does the broker provide?
- How is your broker reviewing/ understanding your contracts?
- What's the experience of broker's teams when it comes to cannabis claims?
- Does your broker have global reach in the cannabis space?
- Is the broker involved in cannabis industry organizations or thought leadership?



kc: 1090090



lockton.com | © 2021 Lockton Companies. All rights reserved.



# CANNATRON

OWN THE SHELF

**#1 VAPE  
BATTERY  
IN THE INDUSTRY**



**BEST SELLING  
TOBACCO-FREE  
WRAP ALTERNATIVES**

**YOUR DISPENSARY  
SUPPLY PARTNER  
IN DETROIT**



OWN THE SHELF WITH CANNATRON

**CANNATRON.COM | 855.669.3420**





# Supply chain management software, purpose-built for the global cannabis and hemp industries.

backboneiq.com

## Backbone Platform Highlights



### Easy, Automated Compliance

We help you get and stay compliant, full lineage chain-of-custody so you are audit and recall ready, all while saving time and tags.



### Simplified Financials

Perfect COGS and live tracking make Backbone your one source of truth, including cannabis and non-cannabis inventory, components, and direct labor.



### Path to Productivity

Make data-driven decisions with real-time reporting for production line efficiency, yields, live inventory, material lineage, and more.



### Quality at Scale

Create consistent products and improve yields across facilities, with end-to-end tracking, informed forecasting, and easy data sharing.



### Customized for You

We work with you to identify and visualize your entire supply chain: every input, material, machine, process and output.



### Integration Ecosystem

Software integrations and hardware connectivity means less manual or double entry, reducing errors and saving time.

273



PURCHASE ORD.

26lbs

CRUDE OIL

WINTERIZE



WINTERIZED OIL

SALES ORD.

103

Cannabis Co.

Production

Dashboard

Inventory

Reports

Action Items

Companies

Procedures

Compliance

### WINTERIZATION SKID #2

Report Issue Edit Machine Details

Vendor  
Model  
Number  
Installed  
Last Maintenance  
Status

Extract Depot  
W5-9901  
2  
1/5/19  
1/12/20  
Operable

Start Skid

Total Runs  
Average Run Time  
Average Yield  
Uptime  
In Use  
Notes

6310  
22:45:28  
80.35%  
96.375%  
67.150%  
Next maintenance Fri 03/30

### Winterization Skid History

Filter All Time

Status	Date	Run	Strain	Vendor	Input	Output	Yield	Solvent Temp	Documents
In Process	03/13/20	Run #631	BlueDog	10 Headwinds	Crude Solution: 228,800 L	Winterized Crude: 183,600 L	82.000 %	-40.000 °C	procedure-wint2.txt
Completed	03/28/20	Run #630	AG/DC	Booneville Sisters	Crude Solution: 224,800 L	Winterized Crude: 197,490 L	87.000 %	-40.100 °C	20-03-20-checkin_.pdf
Completed	03/27/20	Run #629	Purple Pie	Cedar Farms	Crude Solution: 227,000 L	Winterized Crude: 193,800 L	85.000 %	-29.200 °C	
Completed	03/27/20	Run #627	BlueDog	Cashman Crops	Crude Solution: 228,800 L	Winterized Crude: 191,520 L	84.000 %	-29.400 °C	cleaning-log-2020_.pdf
Completed	03/22/20	Run #626	BlueDog	Southwest Farms	Crude Solution: 229,800 L	Winterized Crude: 185,600 L	81.000 %	-40.800 °C	distillation-log-20_.pdf

It's your process. Let's envision it together.

backboneiq.com



KEYNOTE SPEAKER:

## **Andrew Brisbo,** MARIJUANA REGULATORY AGENCY

Andrew was appointed by Governor Whitmer to lead Michigan's Marijuana Regulatory Agency (MRA) in April 2019. The agency oversees the commercial licensing under the Medical Marijuana Facilities Licensing Act and Michigan Regulation and Taxation of Marijuana Act as well as the medical marijuana registry card program under the Michigan Medical Marijuana Act. MRA's mission is to establish Michigan as the national model for a regulatory program that stimulates business growth while preserving safe consumer access to marijuana. Andrew has been in licensing and regulation with the State of Michigan since 2004, including experience with the Michigan Gaming Control Board, Department of State, and occupational and health professional licensing.





# SECURATECH

Where Security and Technology Connect | [www.securatech.com](http://www.securatech.com)

PROTECT YOUR THC WITH CCTV

Securatech is Michigan's Premier Trusted Security Company for the Cannabis Industry

**Our products:**

Burglar / Fire Alarm  
CCTV  
Video Monitoring  
Access Control  
Intercom  
Audio / Video  
Phones / Paging

**Who we protect:**

Provisioning Centers  
Grow Facilities  
Transportation  
Laboratories  
Dispensaries

We also offer temporary security to sites under construction



**CONTACT RUDY PATROS FOR A CUSTOM SOLUTION**

877-929-2288

[RUDY@SECURATECH.COM](mailto:RUDY@SECURATECH.COM)

[WWW.SECURATECH.COM](http://WWW.SECURATECH.COM)



# **CLEARVIEW**

WHERE SECURITY AND TECHNOLOGY MEET

**RESIDENTIAL – COMMERCIAL - INDUSTRIAL**

## **Services:**

- Alarms
- Camera Systems
- Access Control
- Audio Systems
- Phone Systems
- Phone & Data Wiring
- Home Automation
- Home Theaters

**CONTACT US TODAY!**

**855.903.SAFE (7233)**



**MID-AMERICA®**

# THE MIDWEST'S RETAIL REAL ESTATE LEADERS



**Corbin Yaldoo**

Senior Sales Associate, Cannabis Specialist

Mid-America Real Estate - Michigan, Inc.

P: 248.855.6800 C: 248.752.1276

CYaldoo@MidAmericaGrp.com

Illinois | Michigan | Minnesota | Wisconsin  
[www.midamericagr.com](http://www.midamericagr.com)

THERE'S NO PLACE LIKE

PAO



LUXE TUESDAY.

LADIES NIGHT WEDNESDAY.

VIBE NIGHTS FROM  
THURSDAY TO SUNDAY.

CALL 313.816.0000 to book your table or  
email us at [info@paodetroit.com](mailto:info@paodetroit.com) for more information



# PRIME29

STEAKS • SEAFOOD • COCKTAILS

DINNER DESERVES  
TO BE CELEBRATED

## IN STYLE

DINNER. EVENTS. CATERING.

PRIME29 DELIVERS  
PERFECTION EVERY TIME



248.737.7463 | [PRIME29STEAKHOUSE.COM](http://PRIME29STEAKHOUSE.COM) | 6545 ORCHARD LAKE RD, WEST BLOOMFIELD



THIS MUST BE THE PLACE

HIBACHI.  
SUSHI.  
THE BEST TIME OF YOUR LIFE.

NARA

HIBACHI & HOT ROCKS

CALL  
248.847.0000  
FOR RESERVATIONS & CARRYOUT





# The Future is Fulfillment

**Brands:** Minimize time spent on inventory management, to focus on making great products

**Retailers:** Reduce stockouts and unlock bulk discount opportunities



Scan QR code  
to get started



# 420 Coolers

CUSTOM CANNABIS GROW ROOMS



Premium Cannabis Cultivation Rooms for Marijuana Growers |  
Custom Walk-in Coolers and Freezers

420 COOLERS SALES  
 **248-789-3699**





## Be Future Ready

If your facility experiences a disaster, Signal is on call **24 | 7 | 365**

**CALL SIGNAL  
IMMEDIATELY  
800-533-9898**

Signal provides immediate response 24/7, 365 days a year. As a **Signal on Call** Client, should you experience a loss, contact us immediately to receive priority response. Your **Signal on Call** Disaster Priority Rapid Response Team is here to assist you when you need it most.

You've planned ahead. Call us at any time for priority response. We will secure the premises and prevent further damage to the site, and then set the pre-defined plan into action to get you back up and running, as quickly as possible. Our team is here for you.

### Timing is critical.

Good thing you've got **Signal on Call**.

**FIRE • WATER • MOLD • WIND  
STORM • CATASTROPHE**



**800-533-9898**

**Emergency  
Response Hotline**

24-Hour Assistance

**ONCALL**



PRODUCT@PENINSULA-GARDENS.COM  
PHONE: 248-846-3821  
IG: PENINSULA\_GARDENS





# ICONIC

COLLECTION

An Elia Group Company



DOUBLETREE  
BY HILTON  
BLOOMFIELD HILLS DETROIT



Zalman's  
Delicatessen



THE DUKE



PARC  
DETROIT STARTS HERE



220 ROSE  
MERRILL™ ROOM | „220“



THE FOUNTAIN  
DETROIT



Anchor  
BAR & GRILL



CADILLAC LODGE  
DETROIT





# SECURITY, REFINED BY INTELLIGENCE

THE NORTH GROUP helps our clients mitigate the exposure and impact surrounding the threats and crises they regularly face. We understand the unique challenges facing your industry and will provide you with quality risk management services.

We build the solution for you.



## WE CAN ASSIST YOU WITH

- SECURITY SERVICES
- FACILITY ASSESSMENTS
- CRISIS PLANNING
- SYSTEM INTEGRATION AND MORE

CONTACT US FOR A FREE CONSULTATION



1 (844) 750-9222



[solutions@TNGdefense.com](mailto:solutions@TNGdefense.com)



[www.TNGdefense.com](http://www.TNGdefense.com)





## Our Portfolio is Growing



Over 1,000,000 Sq. Ft. Designed  
**Nationally**

Architects with expertise in:

- Cultivation / Extraction
- Infusion
- Retail / Dispensary
- Testing
- Consumption
- Entertainment
- Multi-State Operations (MSO)
- Advancing Cannabis Facility Innovation

**AKA**

**AUGER KLEIN ALLER  
ARCHITECTS INC.**



# Artistic

OUTDOOR SERVICES, INC.



COMPLETE LANDSCAPE DESIGN . . .  
INSTALLATION . . . MAINTENANCE . . .

GAS STATIONS · SHOPPING CENTERS · HOTELS · OFFICE BUILDINGS  
OAKLAND - MACOMB - WAYNE COUNTY

FULL SERVICE COMPANY . . .

LAWN MAINTENANCE · SPRINKLERS · FERTILIZING · FLOWER DESIGN · WATERFALLS  
PARKING LOT SWEEPING · SNOW PLOWING

VILLAGE PARK OFFICES - 31800 NORTHWESTERN HIGHWAY, STE 140  
FARMINGTON HILLS, MI 48334  
TONY KONJA - PH: 248.855.8575 - FAX: 248.855.6985



## AT CANOPY

we understand the unique business insurance needs in the cannabis industry. Our programs offer the right coverage no matter the type of cannabis business you are in.

## OUR COMMITMENT

is to provide superior service with a level of expertise you will not find with non-specialized cannabis insurance providers. Our goal is to ensure you are covered and protected through a rapidly growing and changing industry.

## WHAT'S YOUR CANNABIS SPECIALTY?

Insurance for cannabis cultivators, processors, and retailers requires industry expertise. The cannabis industry is emerging, and adequate coverage is not easily found for these businesses. Is your business in one of our listed verticals? **We have you covered.**

- |                         |                                     |
|-------------------------|-------------------------------------|
| PROCESSOR/HARVESTER     | CULTIVATOR                          |
| ANCILLARY BUSINESS      | TRANSPORTER                         |
| MANUFACTURER            | SECURITY FIRM                       |
| NON-STOREFRONT DELIVERY | LABORATORY                          |
| RETAILER                | DISPENSARY                          |
| WHOLESALE DISTRIBUTOR   | LESSOR'S RISK (LRO)/ BUILDING OWNER |

## CANNABIS WITH CANOPY

**WORKERS COMPENSATION**

**PACKAGE**  
Property/Crop  
General Liability  
Excess Liability

**PRODUCT LIABILITY**

**TRANSPORTATION**  
Auto: Private Passenger, Fleets, Light/Heavy Trucks, Trailers, Mobile Equipment Coverage  
Hired & Non-Owned Auto  
Motor Truck Cargo: Cash, Securities and Cargo

## GET IN TOUCH

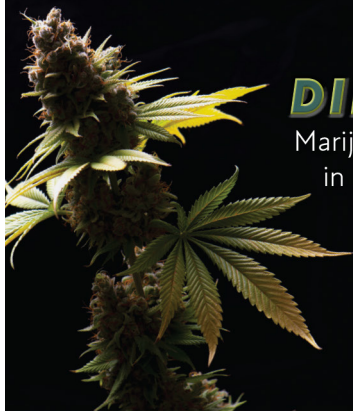


313.662.3522  
contact@canopyinsgroup.com  
335 E. Maple Rd. Birmingham, MI





# Insurance solutions for the **cannabis** industry.



## **DID YOU KNOW?**

Marijuana retailers and microbusinesses in Michigan **ARE NOW REQUIRED** to have **Marijuana Liability Insurance**.



**NEW COVERAGE OPTIONS NOW AVAILABLE!**

Niche. Expertise.



Conifer  
Insurance  
Company

SCAN TO CONNECT  
WITH CONIFER



[www.coniferinsurance.com](http://www.coniferinsurance.com)



CEO, Terry T. Judge

## **BIG TAX SAVINGS FOR CANNABIS OPERATORS WITH COST SEGREGATION & GREEN ENERGY INCENTIVES**

Many grow operators are missing out on hundreds of thousands of dollars in immediate depreciation when purchasing, renovating or constructing a grow facility.

Here at CORE, we are experts in helping the cannabis industry take full advantage of the tax code.

Since 2006, we have saved our clients over \$1.5 Billion Dollars!

### **What is Cost Segregation?**

Cost segregation is an IRS approved tax incentive that increases your near term cash flow by writing off up to 40% of the total cost of the building (minus land) in the years 1-5. The IRS requires an engineering firm like CORE to prepare the detailed allocation to maximize the tax benefits.

### **About CORE**

CORE has completed thousands of cost segregation studies and works with some of the largest accounting and real estate firms in the US.

Our unique staff is made up of engineers, tax and legal experts with years of over 50 years of experience.

Call us for a complimentary benefit analysis.



**CORE**

ADVISORS

[www.coreadvisors.net](http://www.coreadvisors.net)

(M) 248.210.4843





# Detroit

HOME TEAM



"A DETROIT THEMED GIFT SHOP"

FRAMED PICTURES • APPAREL • MEMORABILIA

ARDEN 248.470.6751



@detroitthometeam



COMMERCIAL.RESIDENTIAL.INDUSTRIAL

MASTER ELECTRICAL CONTRACTOR

HARIAN RAIKANY

**(248) 866-8828**

EMAIL: [HARIAN@ENERGYELECTRICSERVICES.COM](mailto:HARIAN@ENERGYELECTRICSERVICES.COM)

[WWW.ENERGYELECTRICSERVICES.COM](http://WWW.ENERGYELECTRICSERVICES.COM)





*The experts in cannabis  
real estate closings.*

TRUSTED FOR OVER 20 YEARS  
WOMEN OWNED | FAMILY OWNED

---

248.502.3100 | [etitleagency.com](http://etitleagency.com)

The FlowerHire team is proud to connect  
the world's most exciting growth  
industry to the planet's best talent.

Thanks for your commitment  
to help shape our industry.

Have a terrific conference.



FlowerHire

TALENT IN CANNABIS™





BUSINESS INSURANCE  
EMPLOYEE BENEFITS  
PERSONAL INSURANCE

## Supporting the Cannabis Industry from Seed to Sale

Cannabis insurance can be complicated but the professionals at Hylant can help. We understand the nuances of the industry and provide guidance on insurance and risk management solutions specifically tailored to your business.

*To learn more, visit us at [hylant.com](https://hylant.com).*



# HYLANT

2401 W. BIG BEAVER ROAD, SUITE 400  
TROY, MI | 248-643-8750



## HYMAN

*The highest person in the room.*



HYMANLIFE.COM



@HYMANCANNABIS



# WE GROW YOUR BUSINESS

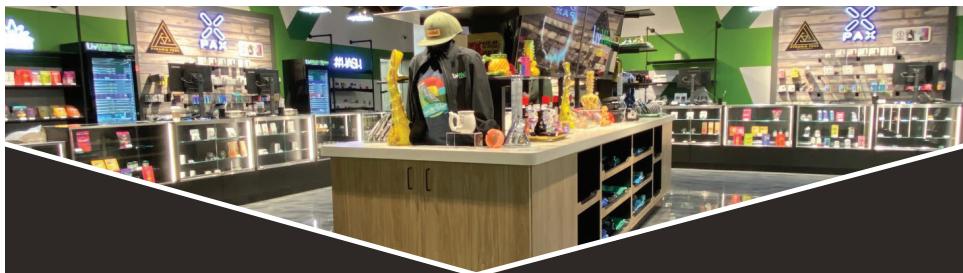
INTERNATIONAL  
@OUTDOOR

*International Outdoor is a full service, Michigan based, billboard company. We have an unrivaled knowledge and understanding of the Detroit market. Let our experience work for you.*



INTERNATIONAL @OUTDOOR

IOBillboard.com  
248.489.8989



**LivWell**  
ENLIGHTENED HEALTH

**NOW OPEN!**

**INTRODUCING YOUR NEW FAVORITE MEDICAL  
PROVISIONING CENTER!**



**RETAIL**

14210 E 11 Mile Road Warren, MI 48089



**WHOLESALE**

©2021 LivWell Enlightened Health. All Rights Reserved. Michigan only. For use by individuals 21 years of age or older or for use by individuals with a valid medical marijuana card only. Keep out of reach of children. It is illegal to drive a motor vehicle while under the influence of marijuana. National Poison Control Center 1-800-222-1222.





Simplifying Business and Life



**A TRUSTED CANNABIS PAYMENT PROCESSOR**

OFFERING CASHLESS ATM SOLUTIONS FOR YOUR BUSINESS NEEDS



[WWW.MERCHANTTREE.COM](http://WWW.MERCHANTTREE.COM)



(800) 610 - 3922



[SUPPORT@MERCHANTTREE.COM](mailto:SUPPORT@MERCHANTTREE.COM)



@MERCHANTTREE



**MOST RELIABLE AND CONSISTENT PAYMENT SOLUTION FOR DISPENSARIES**



**SWIPE AND GO FRICTIONLESS CARD PAYMENT EXPERIENCE**



**COMPATIBLE WITH ALL FORMS OF DEBIT CARDS**

# EVERYTHING YOU WANT



# MKX HAS IT COVERED

[MKXOILCO.COM](http://MKXOILCO.COM)



# ***MOTAS TRANSPORTATION***

**Safe, Efficient, and Secure  
Transportation for  
MMFLA-Licensed Facilities**

248-850-8502 📞

Communications@motasmi.com ✉️

Motasmi.com 🌐



## **Get the Plunkett Cooney Perspective™**

- Business Law ■ Cannabis Law ■ Employment Law
- Environmental & Energy Law ■ Government Relations
- License Applications & Approvals ■ Mergers & Aquisitions
- Real Estate Transactions ■ Regulatory Law

**JEFFREY M. SCHRODER**

Direct: (248) 594-2796

jschroder@plunkettcooney.com

**PLUNKETT**  **COONEY**

ATTORNEYS & COUNSELORS AT LAW

Michigan | Ohio | Indiana | Illinois | [www.plunkettcooney.com](http://www.plunkettcooney.com)





# THE PROFESSIONAL GROUP

TOTAL FACILITIES SERVICES & SUPPLIES

A BELFOR (●) COMPANY



a BELFOR (●) company



a BELFOR (●) company



a BELFOR (●) company



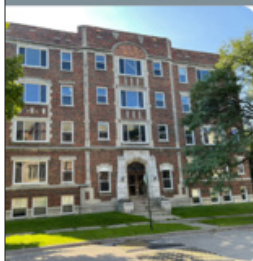
a BELFOR (●) company

## CROSS CONSTRUCTION GROUP

General Contractors & Construction Managers

We specialize in new builds & renovations for facilities such as:

- Grow facilities
- Processing facilities
- Dispensaries
- Testing and lab facilities



[crossconstructiongroup.com](http://crossconstructiongroup.com)

(734) 286-2244

WHETHER YOU  
NEED ONE  
TRADE OR  
MULTIPLE,  
WE'VE GOT YOU  
COVERED!



Resurrection Carpentry

Douglas Mechanical

Max Electric

Dean Flooring

Rocket Exteriors



[stark-enterprisesllc.com](http://stark-enterprisesllc.com)

(313) 293-7046

# ULTRA REFLECTIVE FLOORING SYSTEMS

For Cannabis and Hemp Growing Operations

Professional Installation Available!

## WALL & FLOORING SYSTEMS:

CHEMICAL RESISTANT EPOXY,  
POLISHED CONCRETE,  
ANTI-MICROBIAL COATINGS AND MORE



Ira Berkowitz

866.523.5677 | [ordersuperior.com](https://ordersuperior.com)



BLAZE CANNA

NEW BRANDS COMING SOON @BLAZECANNA

**FCS**  
FUTURE GROW  
SOLUTIONS

**HOLY  
SMOKZ**

**CLEAN. SIMPLE. CANNABIS.**

WWW.HOLYSMOKZ.COM  
INFO@HOLYSMOKZ.COM

**HOUSE OF DANK**  
SHOPHOD.COM

**HYDROGIANT™**  
GARDENING SUPERSTORE



**LET THE EXPERTS AT HYDRO GIANT  
HANDLE YOUR COMMERCIAL GROW**

OUR NEW STATE-OF-THE-ART, 26,000 SQ FOOT  
WAREHOUSE PROVIDES COMPLETE COMMERCIAL  
SERVICES FOR ALL YOUR GROWING NEEDS

**SOUTHGATE**  
19363 Eureka Rd  
734-281-8888

**REDFORD**  
Coming  
Soon

**DETROIT**  
21651 W 8 Mile Rd  
313-387-7700

**DEARBORN**  
14455 Ford Rd  
313-216-8888

**WEST BLOOMFIELD**  
39800 W 14 Mile Rd.  
248-661-0034

**1-855-HYDROGIANT**



**POWERED BY BLAZE**  
@HYPE.CANNABIS







**JARS**  
CANNABIS

@JARS\_LIFE | JARSCANNABIS.COM



MARY JANE'S FRIENDS  
& CO

**BUCKING | TRIMMING | DEFOLIATION**  
AND MORE



**YOURTRIMMERS.COM**



**MiCIA**

MICHIGAN **CANNABIS** INDUSTRY ASSOCIATION

**MICHIGAN'S PREMIER CANNABIS TRADE ASSOCIATION**

Join today! visit [micia.org](http://micia.org) or email: [info@micia.org](mailto:info@micia.org)



**MIDWESTERN CANNA**

CONSULTING | LICENSING | MARKET RESEARCH

[www.midwesterncanna.com](http://www.midwesterncanna.com)



Traverse City - Bay City - Ypsilanti - Detroit - Owosso  
Coming Soon: Meridian & Pontiac



WARREN, MI



**THE PAYMENTS INFRASTRUCTURE  
FOR THE CANNABIS INDUSTRY**

Learn more today at [www.POSaBIT.com](http://www.POSaBIT.com)

Compliant Payment Processing & More



Find out how the Small Business Association of Michigan  
can support your small business.

Visit [sbam.org](http://sbam.org) to view our comprehensive set of tools, resources and  
benefits. You can even become a member for free!





## Introducing Select Elite.

Highly tested, high potency, broad-spectrum oil.

For use by registered qualifying patients or those 21 years of age or older only. Keep out of reach of children. It is illegal to drive a motor vehicle while under the influence of marijuana. National Poison Control Center 1-800-222-1222.



# SKYLABS

**SKYMINT**  
PREMIUM CANNABIS

**NEW CUSTOMERS MENTION  
“HAPPINESS”  
FOR A GIFT WITH PURCHASE**

VALID AT ALL SKYMINT LOCATIONS



**Title Connect LLC**  
a title insurance agency

*A Referral* is the best way to let us know that we provided you with excellent service!

**GET SOMEONE NEW CONNECTED!**

**Contact Jeff S. Gunsberg**  
Principal/Director of Business Development  
248-563-7919 · [www.title-connect.com](http://www.title-connect.com)





The United Green – We're Here to Help You Grow

#1 Cannabis Staffing Company in the Midwest and the Largest in Michigan

Connect with us today.  
Visit [theunitedgreen.com/employer](http://theunitedgreen.com/employer) • Call (947) 886-2427 • E-mail [info@theunitedgreen.com](mailto:info@theunitedgreen.com)



*Derek Dickow Presents:*

# 1:1 COACHING

Create connections. Reach your goals.

## Invest in your future with 1:1 coaching.

When you need an extra edge to win in business, turn to me for personalized guidance. I can help you master the art of networking and achieve your goals – no matter what they are.

My 1:1 coaching program includes a fully customized deep dive into your personal and professional goals and how to best utilize networking to reach them.

**Master the art of networking.**

Learn more at [derekdickow.com/coaching](http://derekdickow.com/coaching)



# Join The Unified Cannabis Platform

Scan this QR code to learn  
more and schedule your demo!

